

RePORT International Newsletter

April 2026

In This Issue

- Farewell, David Hom!
- New Content from RePORT International
- Fellow Interview Series: Felipe Ridolfi

Have something you want to share in the newsletter?

Let us know!

SUBMIT

FAREWELL, DAVID HOM!



It is with both gratitude and sorrow that we wish David Hom a fond farewell and a very happy retirement.

Throughout his career, David has demonstrated an unwavering commitment to service in support of the Rutgers mission in research, education, and clinical impact. His leadership in global tuberculosis research has strengthened Rutgers Health's standing in infectious diseases, while fostering meaningful collaborations, mentoring emerging investigators, and advancing the development and evaluation of innovative diagnostics. Through his dedication, thoughtful guidance, and collaborative spirit, David has made a lasting impact on the Rutgers community and on global public health, exemplifying the highest standards of service and excellence.

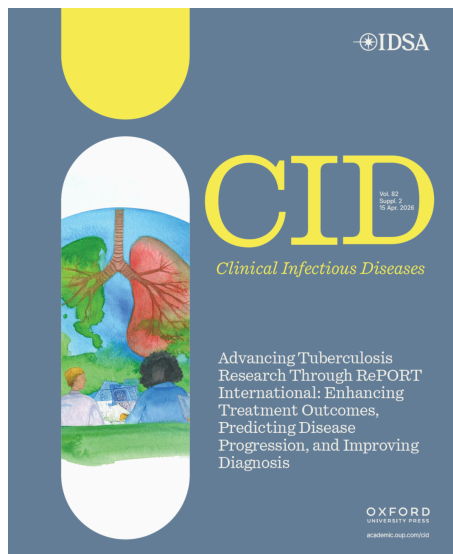


On a personal note, I have truly valued the opportunity to work closely with David over the past four years. He has been an exceptional mentor and a wonderful friend. His depth of knowledge, combined with his approachable and easygoing manner, makes working with him both productive and enjoyable. He has a rare ability to put others at ease, always welcoming questions and offering thoughtful insight. Qualities that have left a lasting impression on me and many others.

We wish you all the best in this next chapter and hope you will stay in touch – you will be greatly missed!

Joanna Radman
Program Supervisor
RePORT International Coordinating Center, Rutgers University

NEW CONTENT FROM RePORT INTERNATIONAL



Clinical Infectious Diseases Supplement

We are pleased to share the release of the RePORT International Clinical Infectious Diseases Supplement, [*Advancing Tuberculosis Research Through RePORT International: Enhancing Treatment Outcomes, Predicting Disease Progression, and Improving Diagnosis*](#), editors, Bruno B. Andrade and Rajita Bhavaraju. This four-manuscript publication provides an overview of RePORT International as well as covers three of its main research areas.

The articles and authors are:

A Narrative Review of the Regional Prospective

Observational Research in Tuberculosis International Consortium: Sharing Diverse Data and Specimens in the Fight Against Tuberculosis

Rajita Bhavaraju, Bruno Andrade, Suzanne Siminski, Soyeon Kim, Mark Hatherill, Timothy Sterling, Amita Gupta, Daphne Martin, Sonali Sarkar, Marissa Alejandria, and Jerrold J. Ellner

Long-term Sequelae of Pulmonary Tuberculosis: A Narrative Review

Akshay N. Gupte, Alix Boisson-Walsh, Moises A. Huaman, Rajita Bhavaraju, Yilan Gao, David Hom, Jerrold Ellner, and Hardy Kornfeld

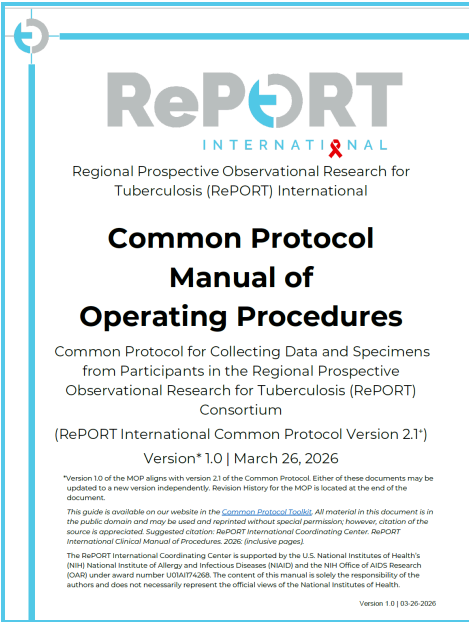
From Exposure to Disease: Predicting Tuberculosis Progression

Mariana Araújo-Pereira, Rajita Bhavaraju, Mark Hatherill, Amita Gupta, Jerrold J. Ellner, Timothy R. Sterling, and Bruno B. Andrade

Asymptomatic Tuberculosis Across the Disease Spectrum: A Scoping Review of Epidemiology, Diagnosis, and Public Health Implications

READ MORE

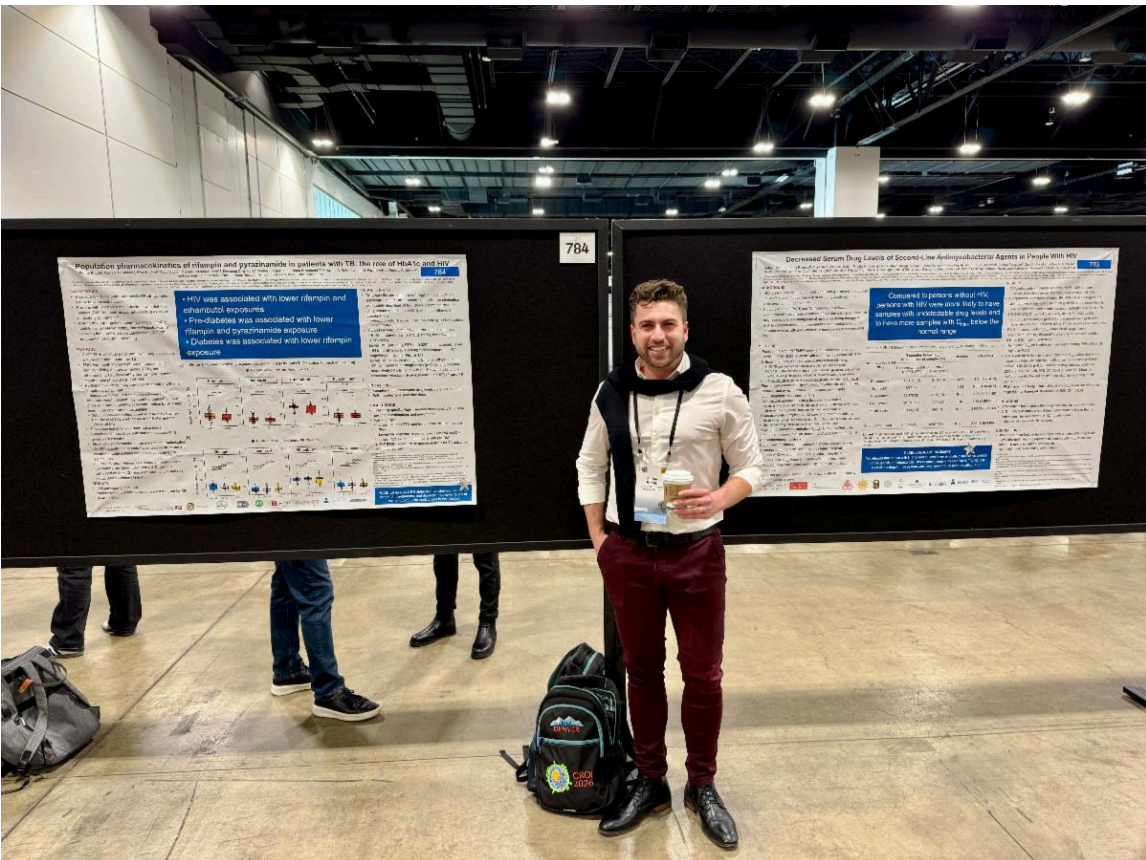
Clinical Manual of Operating Procedures



The RePORT International Common Protocol was revised in 2024. Since then much work was undertaken by the Data Core team to align the [Clinical Manual of Operating Procedures \(MOP\)](#). After its revision, there was a period of public comment and review by RICC leadership. The MOP has finally been completed and posted on RePORT International’s webpage within the [Common Protocol Toolkit](#).

Special thanks to Alex Benns, Rajita Bhavaraju, Stephany Duda, David Hom, Sue Siminski, Tim Tilbe, and Ann Tufariello for their hard work on research, revisions, and formatting, as well as to the field reviewers and members of the Executive Committee for their feedback.

FROM BRAZIL TO NEW YORK: A FELLOW'S JOURNEY



Fellow Interview Series: Felipe Ridolfi

In the next few months we will focus on the first in the class of RICC Post-Doctoral Fellows to complete their research experience.

Five questions with Felipe Ridolfi on pharmacokinetics, breakthroughs, and coming full circle.

Felipe Ridolfi came to the RICC Post-Doctoral Fellowship with a strong foundation in tuberculosis research and left with a specialization - a new way of thinking about how drugs work inside the human body. A physician-researcher trained in Brazil, Felipe spent his fellowship diving deep into population pharmacokinetic modeling, translating complex drug exposure data from the RePORT Brazil cohort into clinical insight. Now matching into the residency program in Internal Medicine at Westchester Medical Center — the very hospital where he was born — Felipe looks back on a fellowship that exceeded every expectation he brought through the door.

Take us back to the beginning: what made you want to become a Fellow with RICC, and what did you think you were signing up for vs. what it actually turned out to be?

The idea of applying to the RICC Fellowship emerged after we published the third paper from my PhD thesis, in which we found that participants with tuberculosis and diabetes had a lower risk of adverse drug reactions. Given that we had TB drug level measurements from the RePORT Brazil, we became interested in exploring the relationship between drug exposure and ADR risk. At the time, I thought I was signing up for a structured, mentored, and funded fellowship that would allow for some degree of independent work. However, it turned out to be a transformative experience. I developed new skills in pharmacokinetics and pharmacodynamics, expanded my research perspective, and built meaningful relationships with colleagues and mentors — including my co-fellows, RICC leadership and staff, and Dr. Robert Bollinger.

"It turned out to be a transformative experience. I developed new skills, expanded my research perspective, and built meaningful relationships."

What's the one experience or moment during your fellowship that stood out?

The most impactful moment for me came after months of working through the challenges of population pharmacokinetic modeling. There was a turning point when everything began to make sense — the data, the models, and the graphical outputs. Being able to clearly interpret the results, articulate them in writing, and confidently discuss them with experts in the field was incredibly rewarding.

How has this fellowship shaped you as a professional? Did it change the way you work, think, or see your field?

The fellowship showed me that I am capable of learning and applying new skills and knowledge, especially with strong mentorship. It expanded my ability to manage patients with tuberculosis and broadened my perspective to other diseases as well. PopPK and PK/PD are complex yet fundamental components of clinical care. Understanding how drugs behave in the body is essential for achieving optimal treatment outcomes. This knowledge has reshaped the way I think about and manage TB, and I will carry it forward into my future clinical practice.

What's next for you?

I am about to begin an exciting new chapter in my career: I matched into Internal Medicine at Westchester Medical Center in Valhalla, New York. Fun fact: it's the hospital where I was born!

And the big one: where do you see yourself in 10 years?

In 10 years, I see myself as a Pulmonary and Critical Care physician, working in both intensive care units and outpatient settings. I also hope to maintain the academic component in my career, continuing to conduct research, study diseases, and contribute to advancing the knowledge, particularly in TB.



Acknowledgments

Felipe would like to thank his mentors sincerely, Dr. Valeria Rolla and Dr. Timothy Sterling, as well as the entire RICC leadership, fellows, and staff. He is especially grateful to Dr. Jerrold Ellner, Dr. Robert Bollinger, Dr. Jotam Pasipanodya (Vanderbilt), and Dr. Gustavo Amorim (Vanderbilt), Rajita Bhavaraju, Daphne Martin, and Mary Talalay, for their support throughout this journey.

Please remember to follow and subscribe. Don't forget to invite others, both inside and outside of RePORT International to follow our updates!



Newsletter Team:

Editor: Rajita Bhavaraju

Content Management: Daphne Martin

Layout & Design: Colter Billings

VISIT OUR WEBSITE

Rutgers University | 225 Warren St | Newark, NJ 07103 US

[Unsubscribe](#) | [Update Profile](#) | [Constant Contact Data Notice](#)



Try email marketing for free today!